

J.L. Fisher® Jib Arms



Model 20
Model 21
Model 22
Model 23

Center Mount

The Model 20, 21 and 22 jib arms can be used on all J.L. Fisher camera dollies with these limitations:

Model 20 on 9 or 10 Dollies with payload over 100 lbs requires Center Mount - 11 Dolly always requires Center Mount

Model 21 on 9 or 10 Dollies with payload over 100 lbs requires Center Mount - 11 Dolly always requires Center Mount

Model 22 on **ALL** Dollies requires Center Mount

The **Model 23** can be used on the Model 9 and 10 camera dollies with a center mount and 18 in RJ18 Heavy Duty Riser.

The **Model 23** should not be used with the Model 11 Dolly.

They are smooth, quiet and easy to set up, with the J.L. Fisher reputation for being well constructed and easily maintained. All jib arms come complete with weight carts, leveling offsets and angle plates.

Note *

When using any J.L. Fisher Jib Arm on dolly track, be sure to mount the dolly on the track **before** assembling the Jib Arm.



Model 20



Model 21



Model 22



Model 23 Sectional Jib

Can be Built to 7 Lengths



Model 20, 21 & 22 FEATURES

- Quick Setup
- Mitchell mounts
- Weight Carts included
- Weight box can be inverted
- Weatherproof

- Front end is submersible
- Adjustable counterbalance weight
- Adjustable Drag Pan & Tilt
- 4 Position Angle Plate
- 12 in Leveling Offset

- Ultra Smooth Pan & Tilt

- Balance Ratio 2:1

Standard Accessories

- Leveling 12" offset
- Angle plate
- Detachable counterweight box
- 27 large weights 11.5 pounds each
- 4 small weights 3 pounds each
- Platewasher, bolt, handscrew and allen wrench
- Riser Nut
- Weight Carts
- Transport Case

Optional Accessories

- 12", 18", 24" or 36" Riser or Dropdown
- Additional weights & bar assembly (XRW)
- Mitchell Euro Adapter (MEA)
- Mitchell Lamp Adapter, Junior 1 1/8" (MLA)
- Weaver Steadman Fluid Heads
- [J.L. Fisher Crossarms](#)



Weight and Accessory Carts



36 in Riser



Model 20 Jib Arm
with CRA4 Crossarm

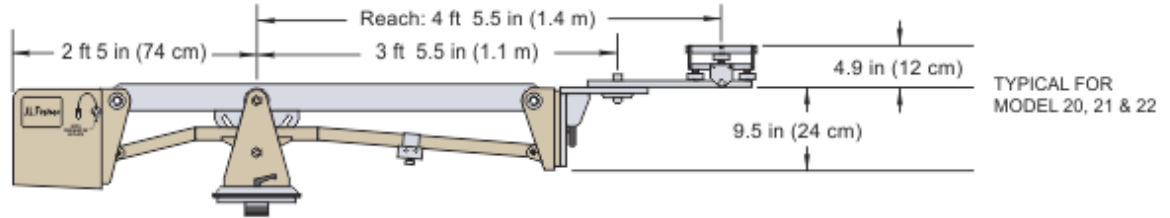
Model 20, 21 & 22 SPECIFICATIONS

Maximum Payloads are calculated from the center line of the Mitchell mount on the leveling offset (LOF)

Model 20

Max payload (with std. weights) . . . 132 lbs (60 kg)
 Max payload (with XRW weights) . . 184 lbs (83 kg)
 Unloaded weight 127 lbs (58 kg)
 Compatible with 9, 10 & 11 Dollies

Max height on 10 Dolly beam 8 ft 6 in (2.6 m)
 Min height on 10 Dolly beam -3 in (-7.6 cm) (below ground level)
 Max height on 10 Dolly Center Mount . . 8 ft 3 in (2.5 m)
 Min height on 10 Dolly Center Mount . . 1 ft 7 in (48 cm)



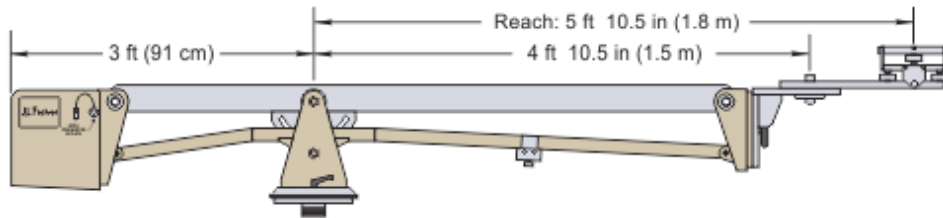
Model 20 on 9 or 10 Dollies with payload over 100 lbs requires Center Mount

Using 11 Dolly always requires Center Mount

Model 21

Max payload (with std. weights) . . . 118 lbs (54 kg)
 Max payload (with XRW weights) . . 164 lbs (74 kg)
 Unloaded weight 134 lbs (61 kg)
 Compatible with 9, 10 & 11 Dollies

Max height on 10 Dolly beam 9 ft 6 in (2.9 m)
 Min height on 10 Dolly beam -1 ft (-30.5 cm) (below ground level)
 Max height on 10 Dolly Center Mount . . 9 ft 4 in (2.8 m)
 Min height on 10 Dolly Center Mount . . 6 in (15 cm)



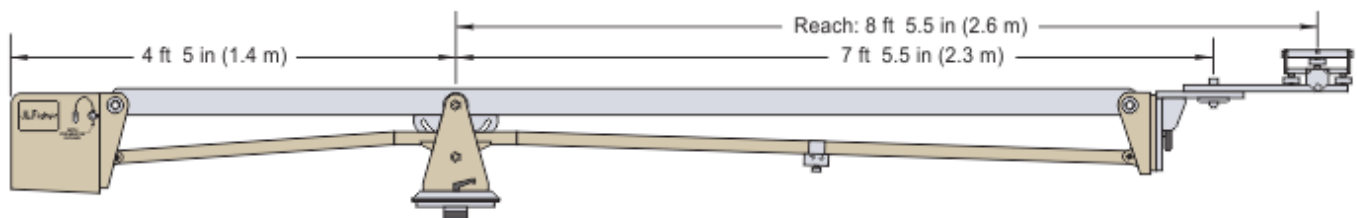
Model 21 on 9 or 10 Dollies with payload over 100 lbs requires Center Mount

Using 11 Dolly always requires Center Mount

Model 22

Max payload (with std. weights) . . . 124 lbs (56 kg)
 Max payload (with XRW weights) . . 175 lbs (80 kg)
 Unloaded weight 161 lbs (73 kg)
 Compatible with 9, 10 & 11 Dollies

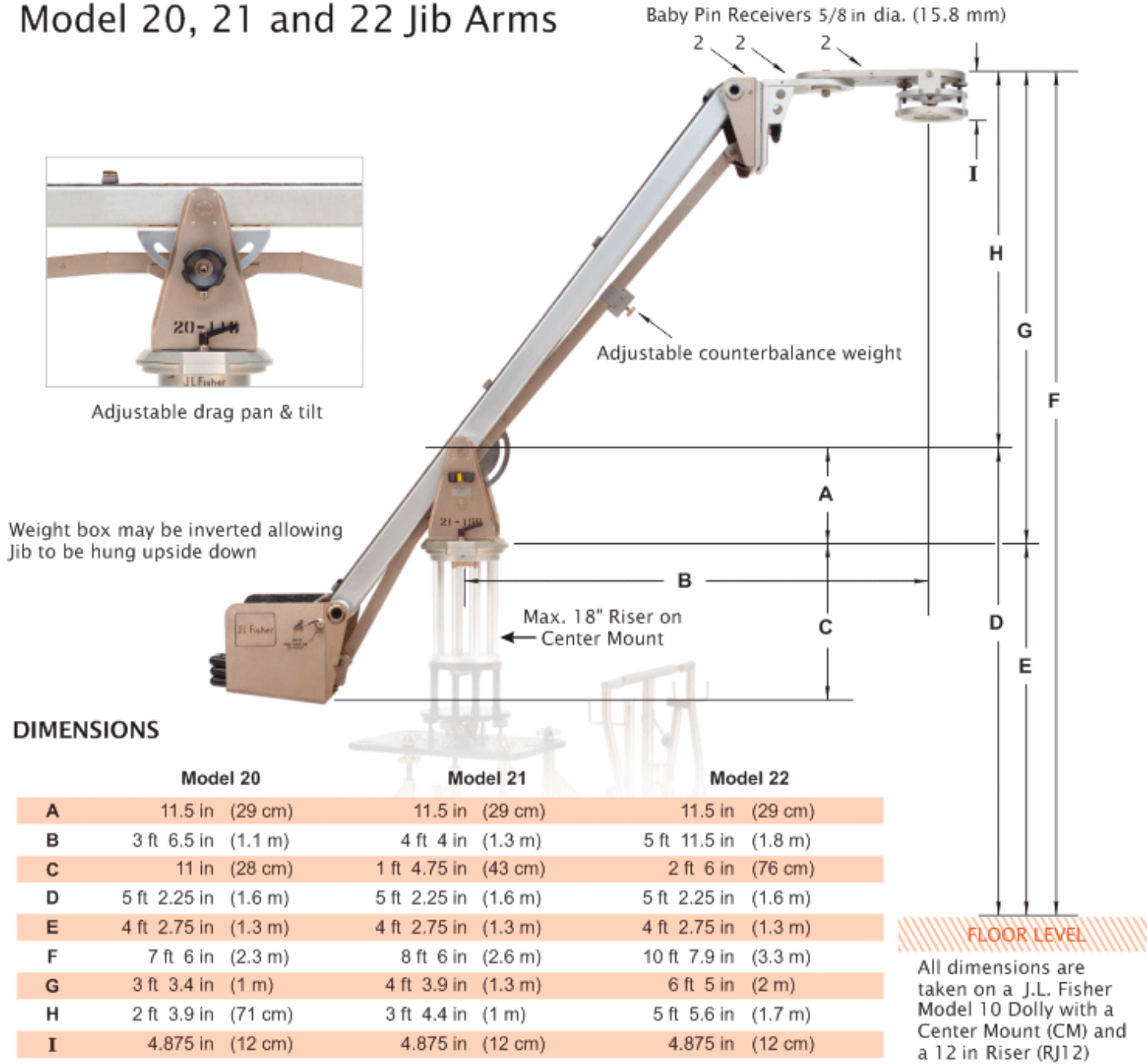
Max height on 10 Dolly beam **Do Not Use on Dolly beam**
 Min height on 10 Dolly beam **Do Not Use on Dolly beam**
 Max height on Center Mount 11 ft 5 in (3.5 m)
 Min height on Center Mount -1 ft 6 in (-46 cm) (below ground level)



Model 22 on **ALL** Dollies requires Center Mount

Model 20, 21 & 22 DIMENSIONS

Model 20, 21 and 22 Jib Arms



[Click Here for Center Mount Info](#)

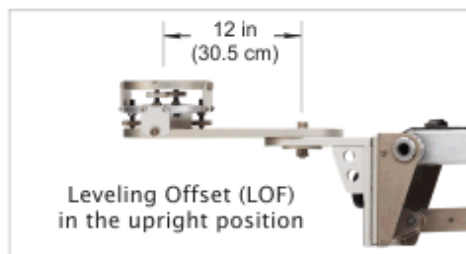
Model 20, 21 & 22 ACCESSORIES

Model 20, 21 & 22 Standard Accessories

- Leveling 12 in Offset
- Angle Plate
- Detachable counterweight box
- 27 large poly coated weights, 11.5 lbs each
- 4 small poly coated weights, 3 lbs each
- Plate washer & bolt, hand screw and allen wrench
- Riser Nut
- Weight Carts
- Transport Case



Weight and Accessory Carts

Transport Case
(Not included for local rental)Leveling Offset (LOF)
in the upright position

Max. 18"

Model 22 Jib Arm shown on Model 10 Dolly with Center Mount.

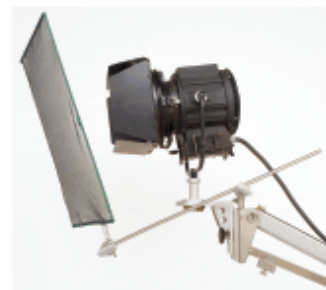


Model 21 Jib Arm shown on Model 9 Dolly

Model 20, 21 & 22 OPTIONAL ACCESSORIES

- 12, 18, 24 or 36 in Riser or Dropdown
- Additional weights & bar assembly (XRW)
- Mitchell Euro Adapter (MEA)
- Mitchell Lamp Adapter, Junior 1 1/8 in (MLA)
- Weaver Steadman Fluid Heads
- J.L. Fisher Crossarms

ADD A CROSSARM FOR MULTI-AXIS MOVES

Model 20 Jib Arm with
CRA4 Crossarm shown
on Model 11 DollyRiser or Dropdown
from 12 in to 36 inWeaver Steadman Fluid
Heads are available in 2
and 3 axis versions with
extension tubes up to 36 inMitchell Euro
Adapter (MEA)Mitchell Lamp
Adapter (MLA)
Junior 1 1/8 in5K lamp on MLA
1 1/8 in lamp adapter

*Additional Risers are for use on end of Jib Arms only.
Do not use these Risers on the Center Mount (CM).*

Weight Bar and weights (XRW) add
100 lbs. of counterbalance

Not for use on the Model 23 Jib Arm

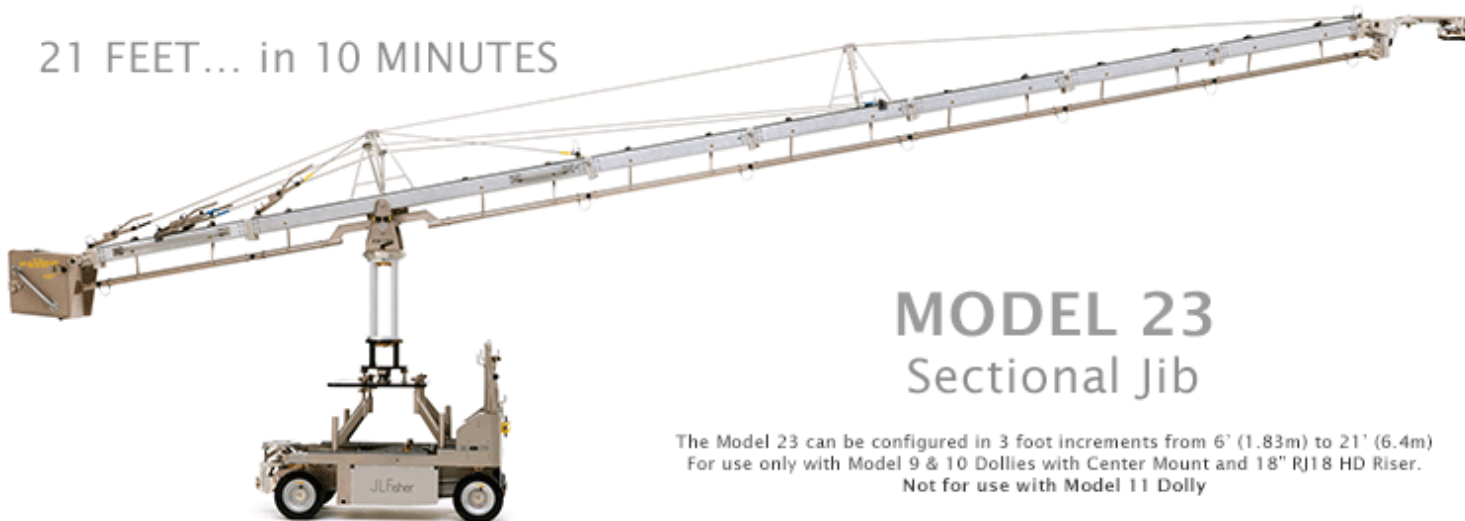


An optional Weight Bar and weights to counterbalance the Jib. The Weight Bar installs easily and has quick release keepers to hold the weights in place.

Model 23 SECTIONAL JIB ARM

QUICK - LIGHTWEIGHT - PORTABLE

21 FEET... in 10 MINUTES



The Model 23 can be configured in 3 foot increments from 6' (1.83m) to 21' (6.4m)
For use only with Model 9 & 10 Dollies with Center Mount and 18" RJ18 HD Riser.
Not for use with Model 11 Dolly

The Model 23 Jib is a stable, yet lightweight sectional arm used for Features, Television, Commercials, Music Videos, and Live Productions. The Jib sections are ergonomic, easy to handle and assemble quickly. Color-coded, pre-tensioned cables secure the assembled sections into an extremely rigid Jib. The Model 23 Jib rotates 360 degrees and enables the operator to position the camera at various elevations from -9 ft 4 in to 20 ft 7 in high.

**For use only with Model 9 & 10 Dollies with Center Mount and 18 in RJ18 Heavy Duty Riser.
Not for use with Model 11 Dolly.**

7 SIZES ALL IN ONE BOX

- The Model 23 Jib sections, cables and parts store conveniently in compartments in a self-contained utility cart.
- Four weight carts are provided for easy transportation of weights and other accessories.
- The Jib can be configured in 3 foot increments from 6' (1.83m) to 21' (6.4m).
- Support cables are pre-adjusted to the proper length and color coded for easy assembly.
- Assembly instructions for all lengths and safety guidelines included.
- All required parts for all 7 lengths are included in the Utility Cart.

DIMENSIONS & WEIGHTS (for local pickup)

Utility Cart Full, with Main Jib Section
 79 in L x 28 in W x 72 in H
 (201.7 cm L x 71.1 cm W x 182.9 cm H)

Weight Carts
 23 in L x 17 in W x 43 in H
 (58.4 cm L x 42.2 cm W x 109.2 cm H)

Utility Cart 581 lbs (263.5 kg)

WCC
 242 lbs
 (109.8 kg)

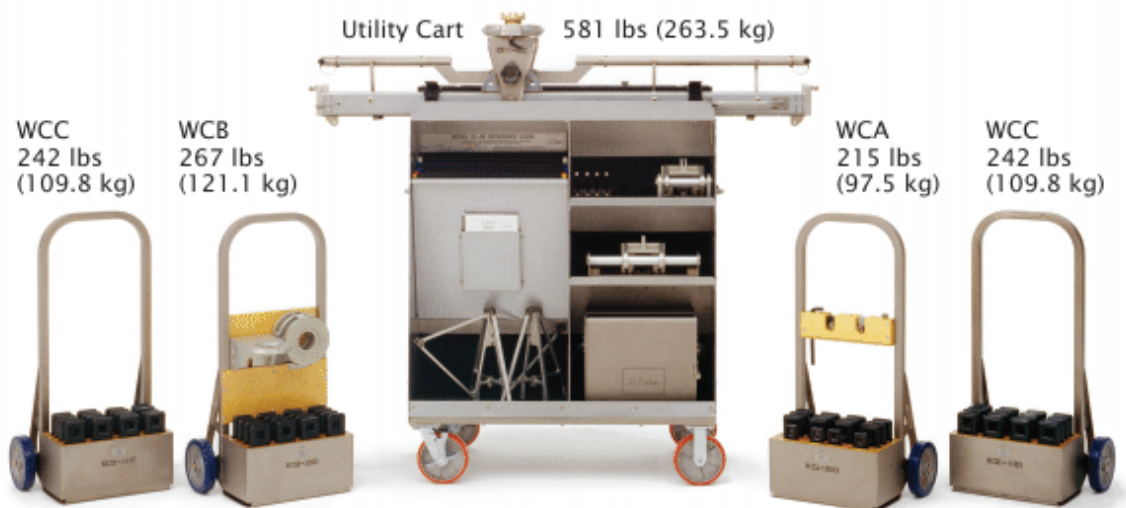
WCB
 267 lbs
 (121.1 kg)

WCA
 215 lbs
 (97.5 kg)

WCC
 242 lbs
 (109.8 kg)



Utility Cart rear view
 showing section storage



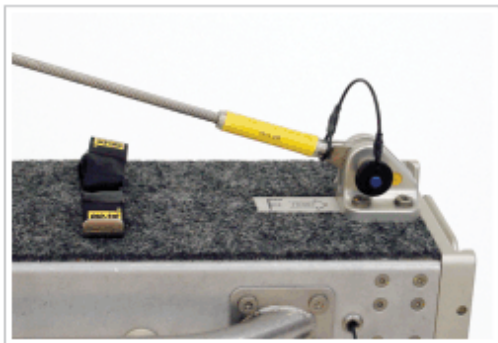
UTILITY CART, WEIGHTS AND WEIGHT CARTS (Ready for local pickup)

Total Weight: Utility Cart & 4 Weight Carts 1547 lbs (701.7 kg)

Utility Cart conveniently stores all Jib parts for all 7 lengths

THE MODEL 23 JIB CAN BE BUILT OUT TO 21 FEET IN 10 MINUTES

6 feet



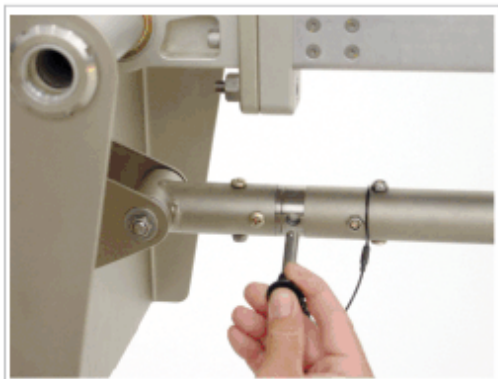
All cables are color coded



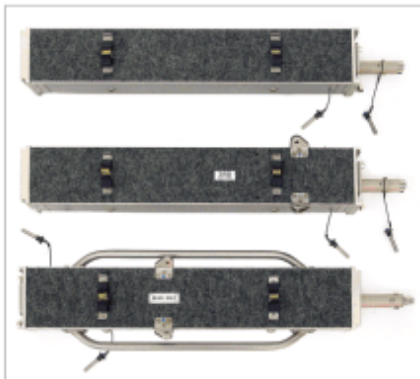
Cables in separate color coded bags



Installing the 4-way Leveling Offset



Locking pins secure all lower links



The Model 23 is built in 3 foot sections



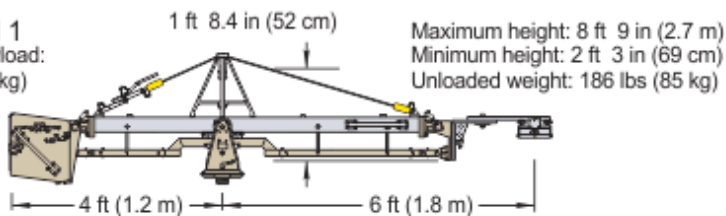
Tensioning the cables

Model 23 SPECIFICATIONS

BUILD IT OUT TO THE LENGTH YOU NEED

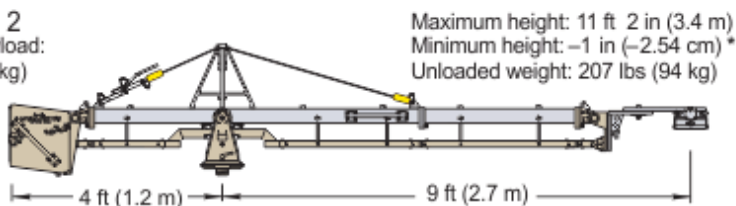
VERSION 1

Maximum payload:
200 lbs (91 kg)



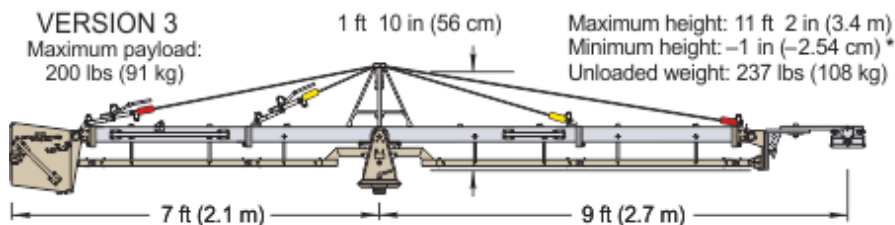
VERSION 2

Maximum payload:
200 lbs (91 kg)



VERSION 3

Maximum payload:
200 lbs (91 kg)



VERSION 4

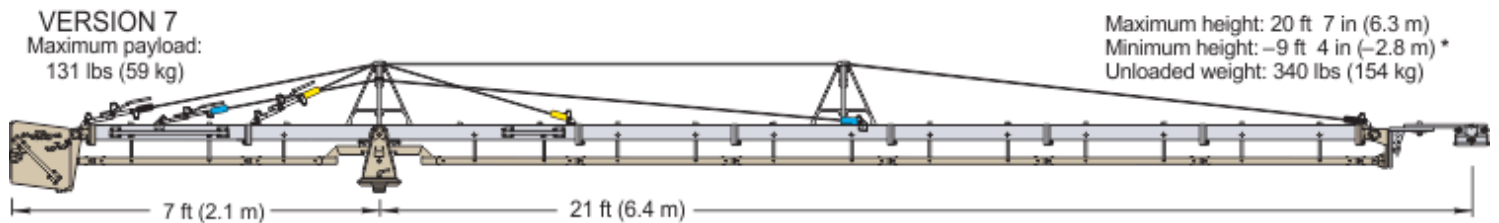
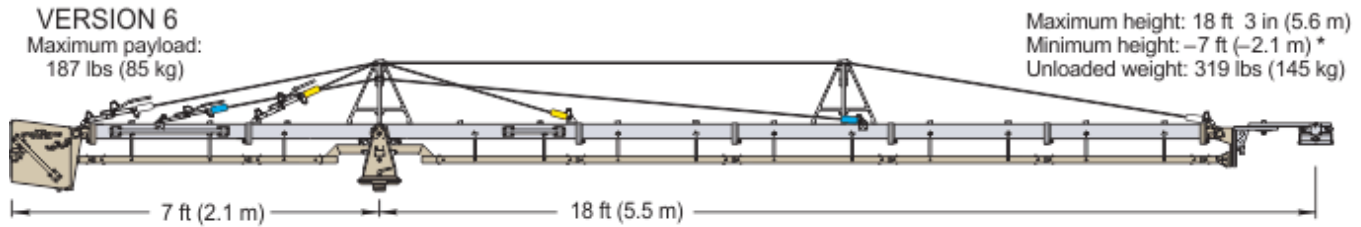
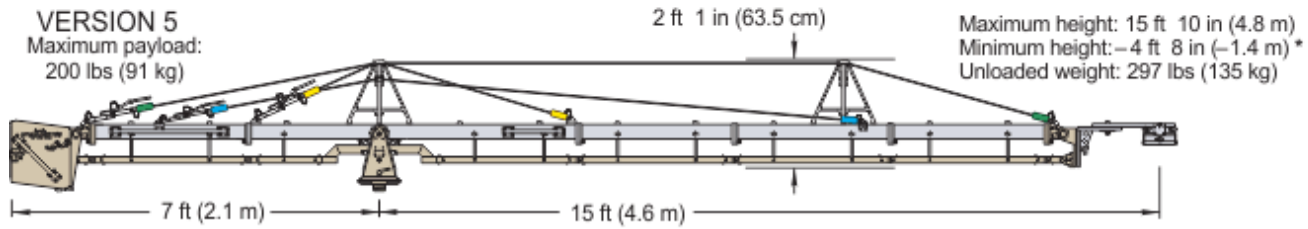
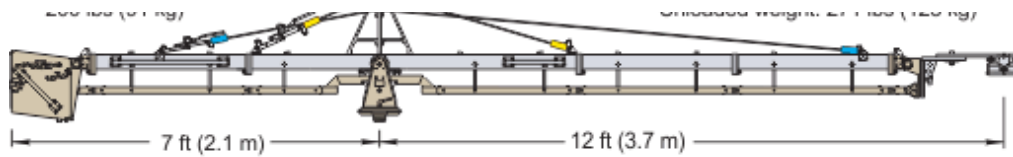
Maximum payload:
200 lbs (91 kg)

Maximum height: 13 ft 6 in (4.1 m)
Minimum height: -2 ft 4 in (-71 cm)*
Unloaded weight: 271 lbs (123 kg)



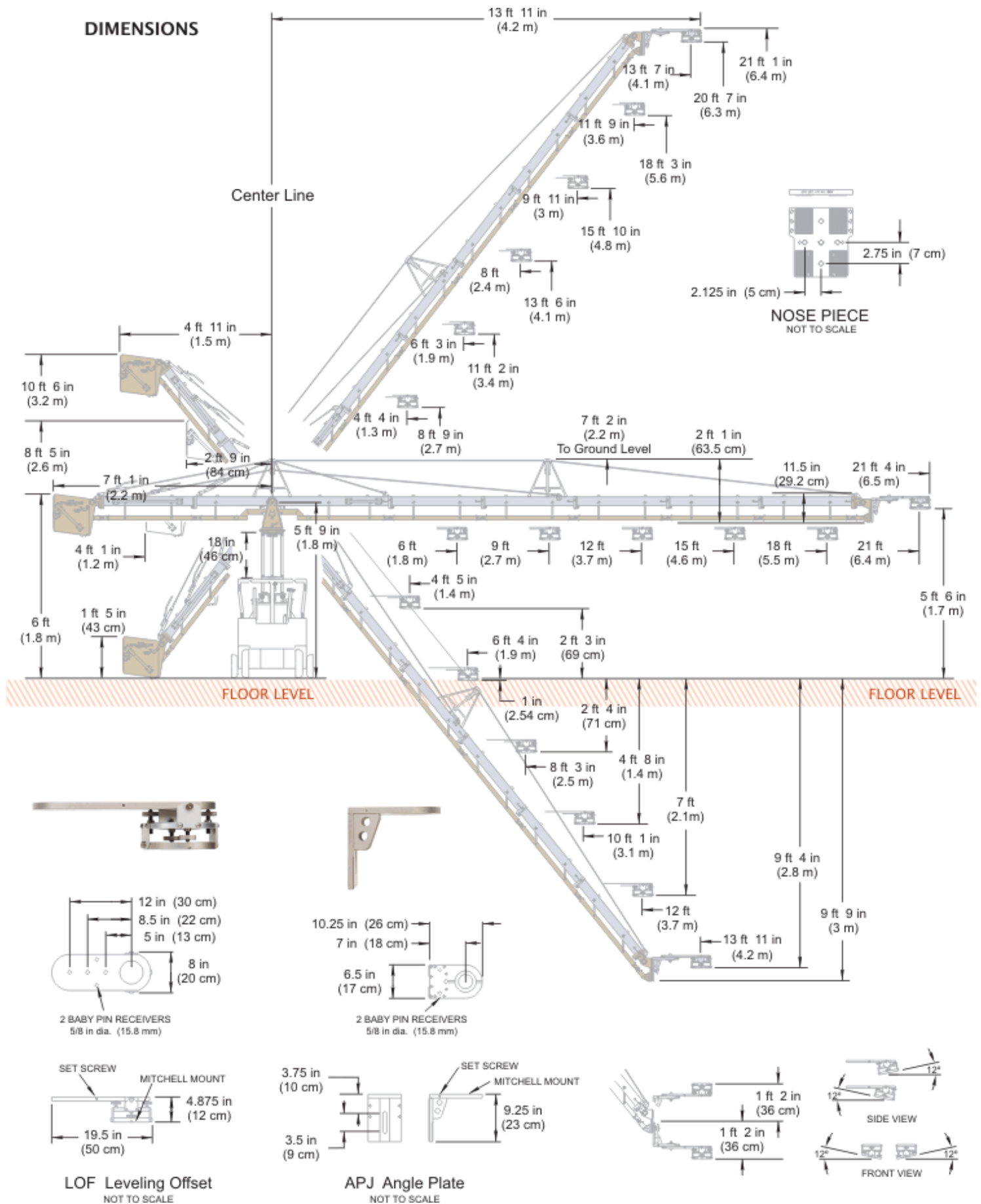
Two experienced grips can assemble this Jib to its full length in 10 minutes





The Model 23 is for use only with Model 9 & 10 Dollies with Center Mount and 18 in RJ18 Heavy Duty Riser. **Not for use with Model 11 Dolly.**

Model 23 DIMENSIONS



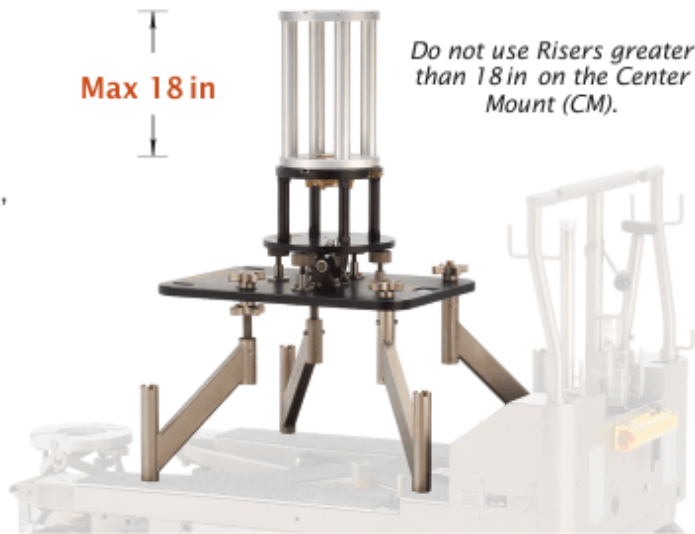
CENTER MOUNT

USING THE CENTER MOUNT

The Center Mount (CM) mounts easily on the Model 9, 10 and 11 Dollies. It has a four-way leveling adjustment with a leveling indicator. The Center Mount has a standard Mitchell mount and comes with a Heavy Duty 12-inch Riser (RJ12) for use with the our Model 20, 21 and 22 Jib Arms. The Center Mount for the Model 23 Sectional Jib Arm (CM3), for use on the Model 9 and 10 Dollies only, comes with an 18 inch Heavy Duty Riser (RJ18).

The maximum gross load capacity of the Center Mount when used on the Model 9 and 10 Dollies is 1200 pounds (544 kg). Due to the Model 11 Dolly's maximum load capacity of 900 pounds (408 kg) the Center Mount's maximum load capacity, when used on a Model 11 Dolly is 900 Pounds (408 kg).

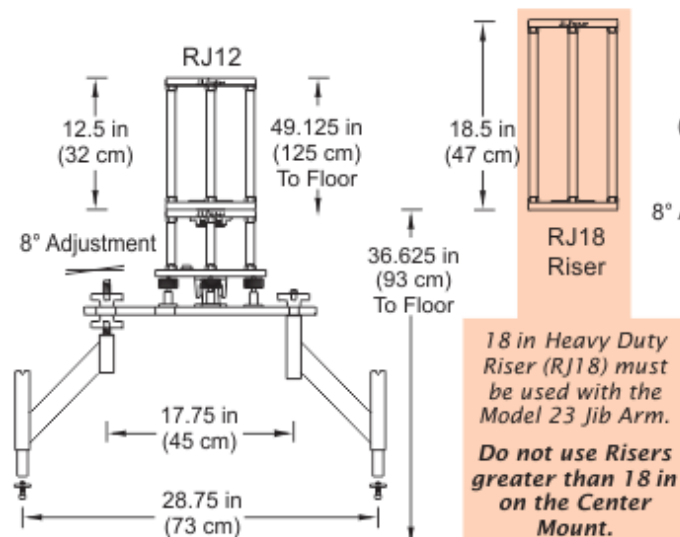
Note: When using the Center Mount on the Model 11, this 900 pound (408 kg) limit must not be exceeded. Also, the Center Mount is not for supporting personnel or personnel carrying cranes.



Center Mount (CM) and RJ12 Riser shown on Model 10 Dolly

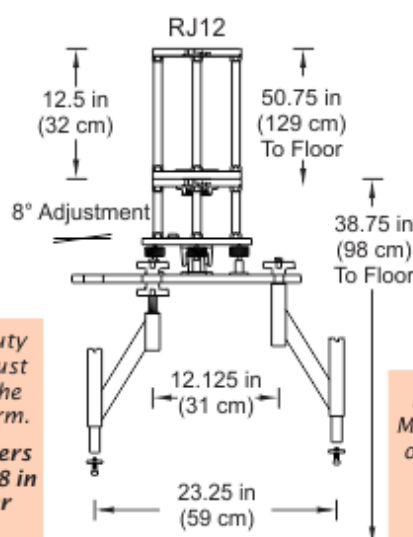
CENTER MOUNT DIMENSIONS

CENTER MOUNT ON 9 DOLLY

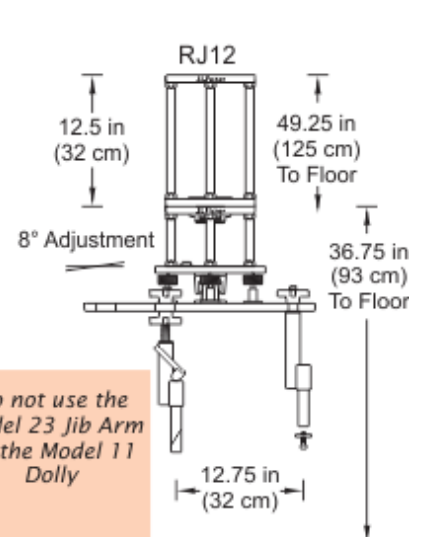


Use the Model 23 Jib Arm on the Model 9 & 10 Dollies only

CENTER MOUNT ON 10 DOLLY



CENTER MOUNT ON 11 DOLLY



J.L. FISHER® is a registered trademark of J.L. Fisher, Inc.

J.L. Fisher, Inc. Motion Picture & Television Equipment
1000 W. Isabel Street, Burbank, CA 91506 U.S.A. Tel: (818) 846-8366 / Fax: (818) 846-8699
Web: www.jlfisher.com e-mail: info@jlfisher.com

J.L. Fisher, GmbH Emil-Hoffmann-Str. 55-59 50996 Köln, Germany
Tel: +49 2236 3922 0 Fax: +49 2236 3922 12
Web: www.jlfisher.de e-mail: info@jlfisher.de